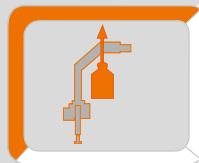


# ATLAS

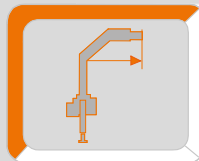
Krane / Cranes / Grues



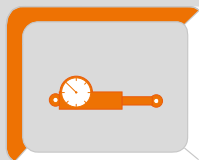
## Ladekran AK 440 VCS



max: **2200 kg**  
**4850 lbs**



max: **22.00 m**  
**72.20 ft**

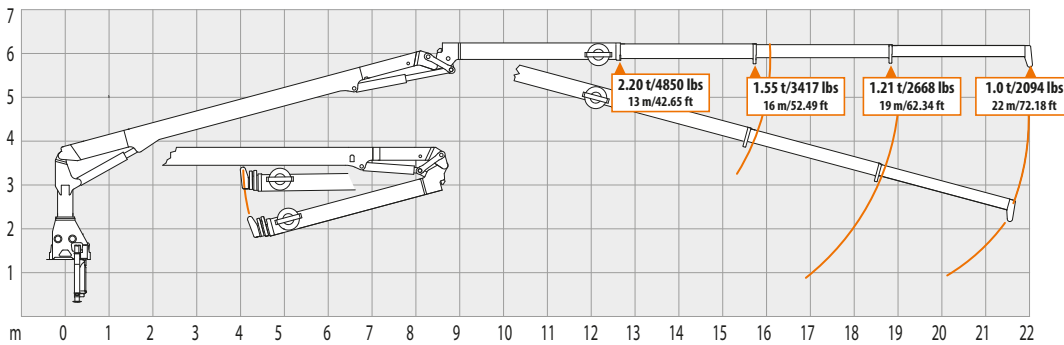


max: **300 bar**  
**4351 psi**

**AVAILABLE & COST EFFECTIVE**

# LASTDIAGRAMM

Load Diagram-Diagramme de charges



**A21L**

Hubarmstellung 15°  
Boom position 15°  
Faites tonner la position à 15°

## AUSSTATTUNG

Facilities - Equipements



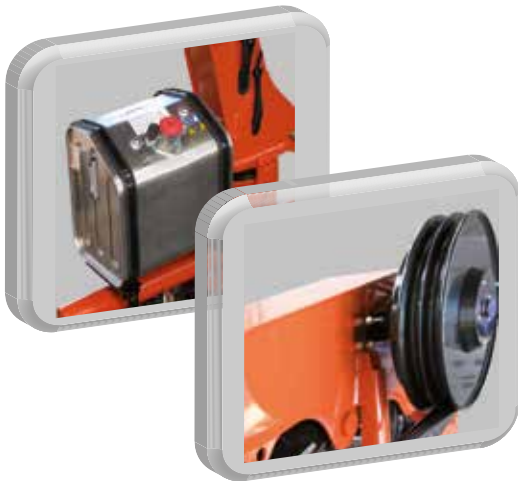
Seilwinde  
Cable winch  
Treuil à Câble



Zusatzabstützträger  
Additional outriggers  
D'autres stabilisateurs

## STEUERUNG

Control - Contrôle



## WERKZEUGE

Tools - Outils



Steinstapelzange  
Brick Stack Grapples  
Pincés à Parpaings



Greifer  
Grabber  
Grappin



Krangabel  
Pallet Fork  
Fourches

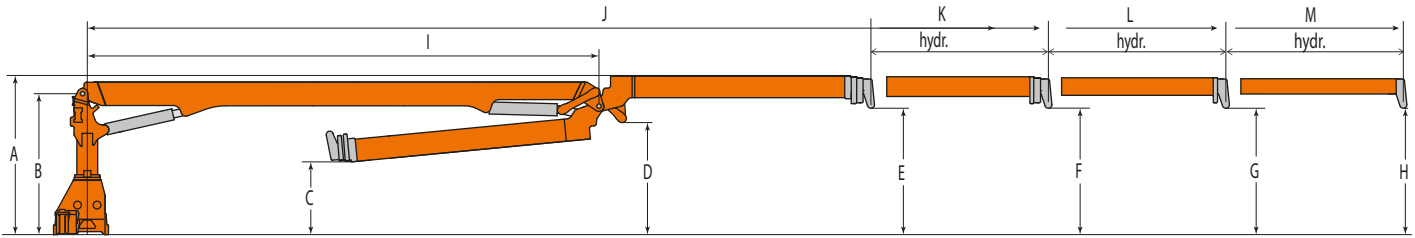


**ATLAS**

# ABMESSUNGEN

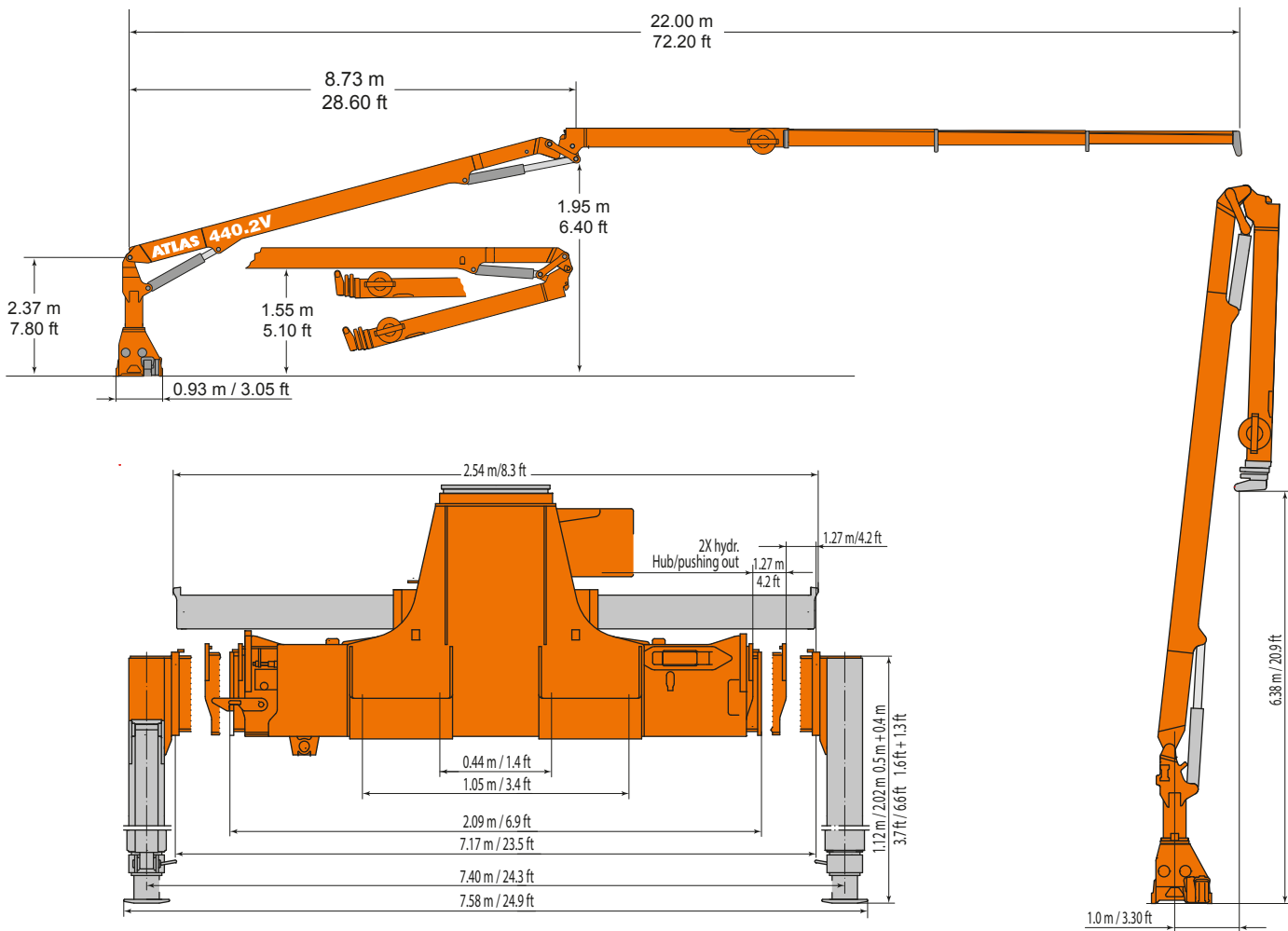
Dimensions - Dimensions

# LADEKRAN AK 440VCS



	A	B	C	D	E	F	G	H	I	J	K	L	M	
Atlas 440VCS A21L	2.69	2.38	1.23	1.90	2.14	2.14	2.14	2.14	8.65	13.25	16.25	19.25	22.25	m
	8.8	7.8	4.0	6.2	7.0	7.0	7.0	7.0	28.4	43.5	53.3	63.2	73.0	ft

Angegebene Masse nur mit abgestuetztem Knickarm erreichbar / Mass specified only reachable supported articulated / Masse spécifiée accessible uniquement supporté articulé



Grundgerät ohne Abstützung, kleinste Abstützweite / Basic unit without support, small outrigger / Unité de base sans le soutien, balancier petits

## AK 440VCS

## HC1/B3

	Gewicht Weight Poids Peso	Betriebsdruck Operating pressure Pression de service Presión de servicio	Ölfördermenge Oil supply amount Débit d'huile Caudal de aceite	Schwenkbereich Swivel range Plage de pivotement Alcance de giro	Schwenkmoment Swivel moment Couple de pivotement Par de giro momento	Hubmoment Lifting moment Moment de levage Momento de elevación
Typ						
A21L	<b>4800 kg</b> 10582 lbs	<b>300 bar</b> 4351 psi	<b>50 l/min</b> 11 US gal/min	<b>410°</b> 410 degrees	<b>68.0 kNm</b> 25.1 tonf ft	<b>215.8 kNm</b> 79.5 tonf ft

# ATLAS



**sicher**

safe, sûr

**flexibel**

flexible, flexible

**innovativ**

innovative, innovante

**effizient**

efficient, efficace

**kraftvoll**

powerful, puissant

**Atlas Maschinen GmbH**

**erreichbar**

available, joignable



Atlasstrasse 6  
D-27777 Ganderkesee  
Tel.: +49 (42 22) 954-0  
Fax: +49 (42 22) 954-220  
E-mail: info@atlasgmbh.com  
www.atlasgmbh.com

**[www.atlasgmbh.com](http://www.atlasgmbh.com)**

YOUR CONTACT INFORMATION