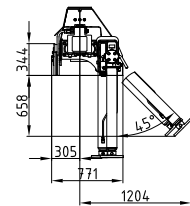
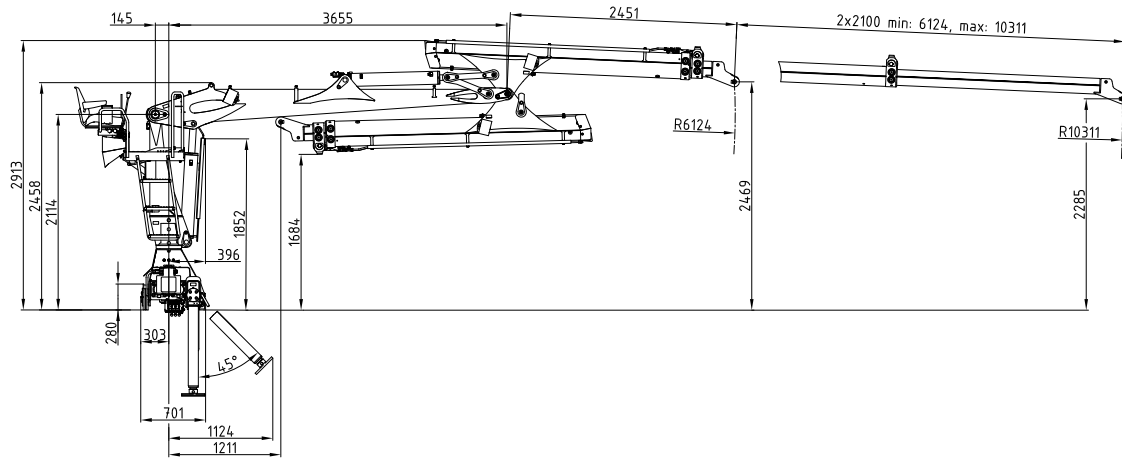
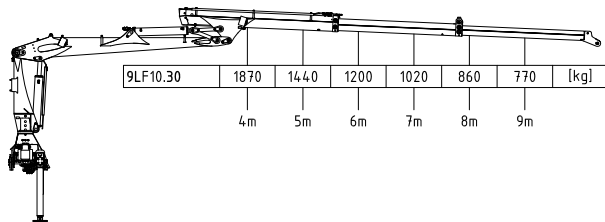
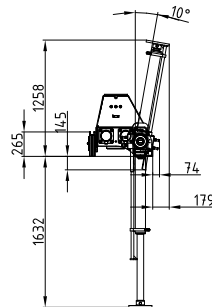


9LF

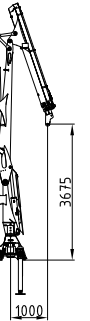
74 kNm	10,3 m	3,68 m	3,8 - 5 m	2.270 kg	420°	20 kNm	215 bar	1x Minimum 80 l/min ~ 31 kW	2x Minimum 60 l/min ~ 47 kW	LS Minimum 150 l/min ~ 60 kW



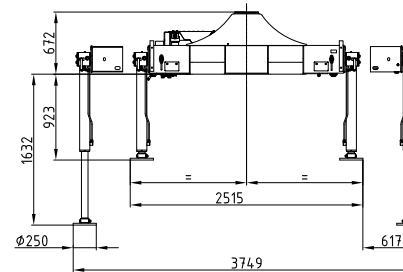
170° Hochklappung
170° of lifting up



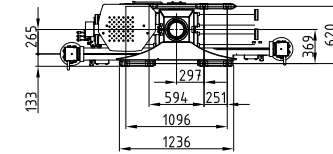
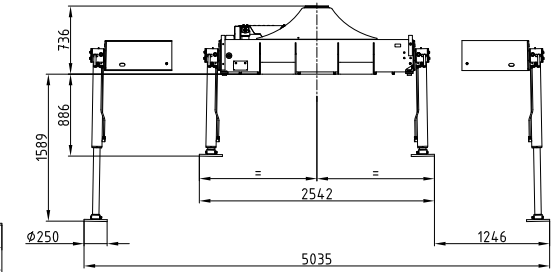
10.30



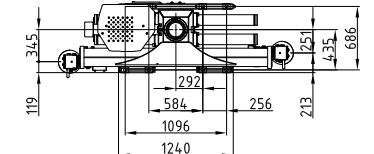
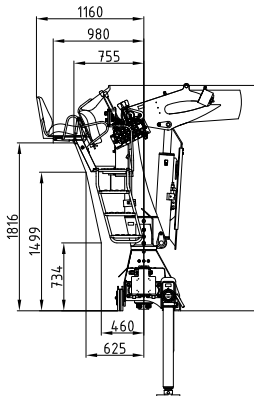
Kransockel schmal
Crane base small



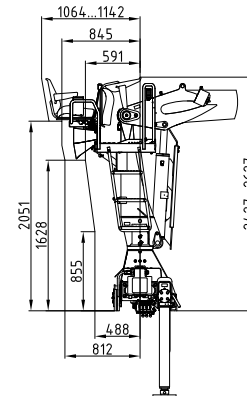
Kransockel breit
Crane base wide



Rücksitz 01
Back seat 01



Rücksitz 04
Back seat 04



Seitensitz 04
Side seat 04

