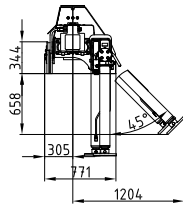
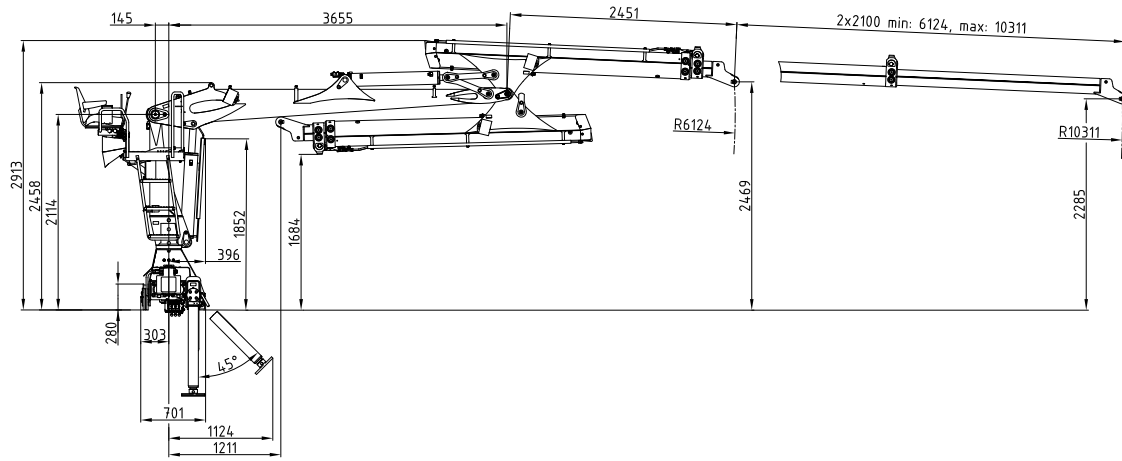
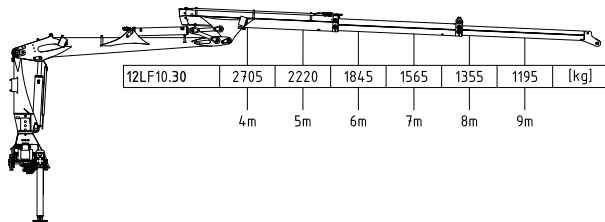
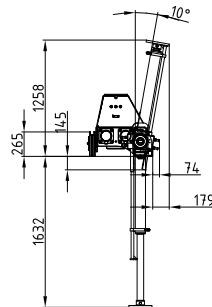


# 12LF

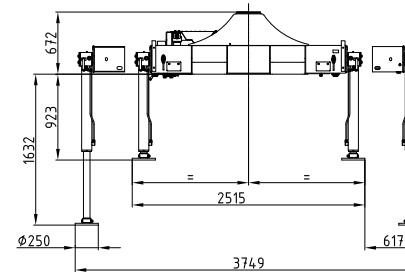
110 kNm	10,3 m	3,68 m	3,8 - 5 m	2.290 kg	420°	25 kNm	230 bar	1x Minimum 80 l/min ~ 31 kW	2x Minimum 60 l/min ~ 47 kW	LS Minimum 150 l/min ~ 60 kW



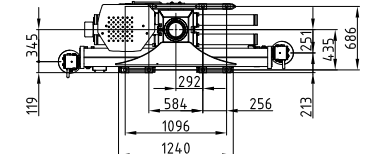
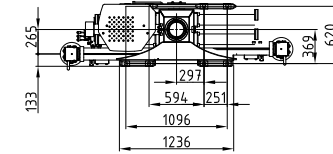
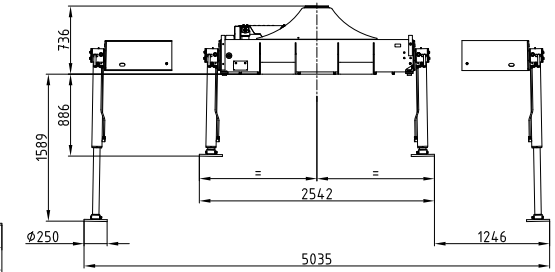
170° Hochklappung  
170° of lifting up



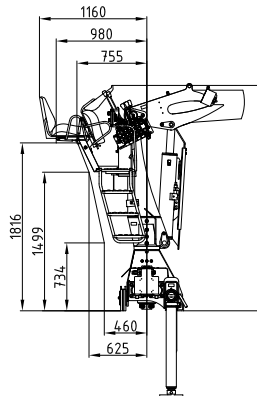
Kransockel schmal  
Crane base small



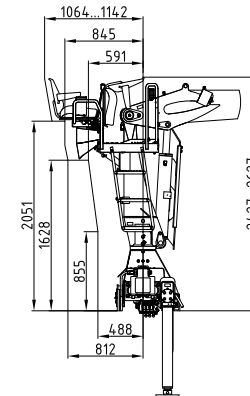
Kransockel breit  
Crane base wide



Rücksitz 01  
Back seat 01



Rücksitz 04  
Back seat 04



Seitensitz 04  
Side seat 04

