






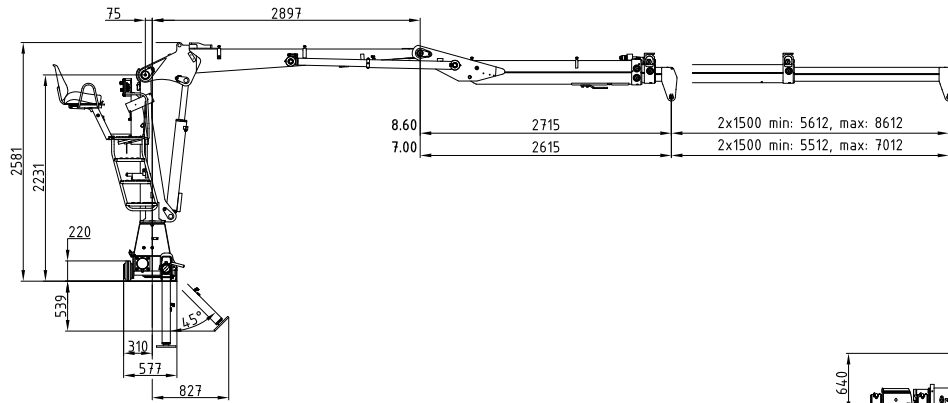


6Z 7Zp+

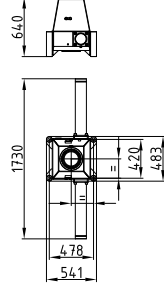
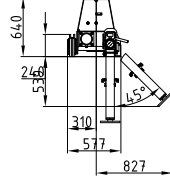
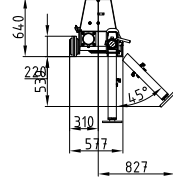
- 
52 - 64 kNm
- 
7,0 - 8,6 m
- 
2,66 - 2,75 m
- 
3,3 - 4,1 m
- 
1.270 - 1.350 kg
- 
410°
- 
14 kNm
- 
205 - 240 bar
- 
1x
Minimum 60 l/min ~ 30 kW
- 
LS
Minimum 90 l/min ~ 35 kW



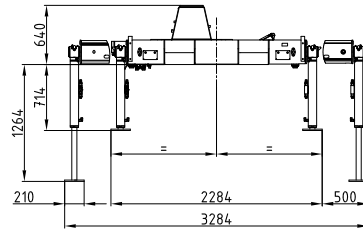
Kransockel Standard
Crane base standard

Kransockel mittig
Crane base centered

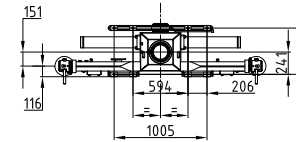
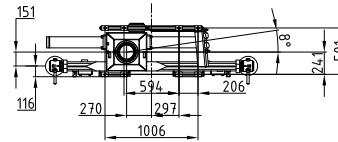
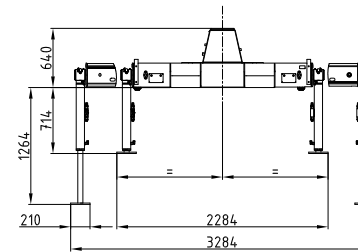
Kransockel stationär
Crane base stationary



Kransockel Standard
Crane base standard

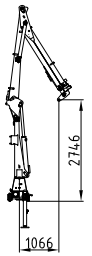
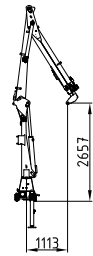


Kransockel mittig
Crane base centered

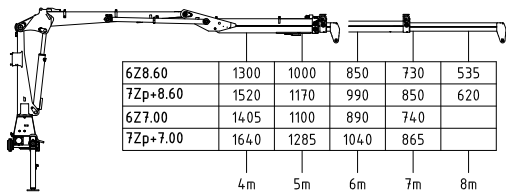
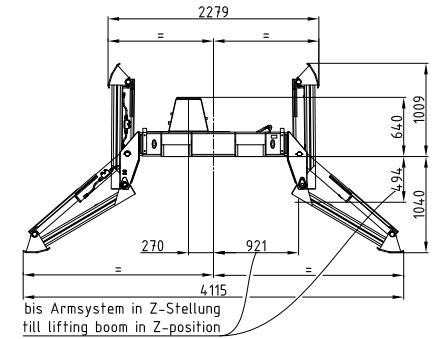


8.60

7.00

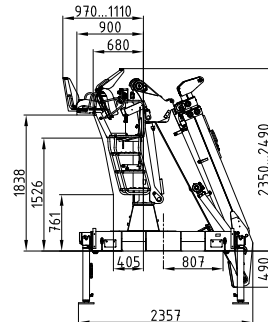


Klappabstützung
Folding support

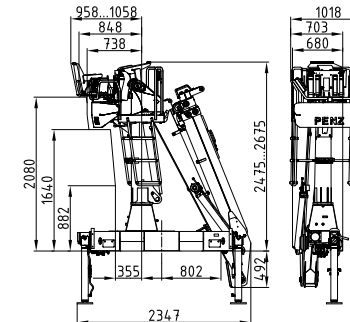


| | | | | | | |
|----------|------|------|------|-----|-----|------|
| 6Z8.60 | 1300 | 1000 | 850 | 730 | 535 | [kg] |
| 7Zp+8.60 | 1520 | 1170 | 990 | 850 | 620 | [kg] |
| 6Z7.00 | 1405 | 1100 | 890 | 740 | | [kg] |
| 7Zp+7.00 | 1640 | 1285 | 1040 | 865 | | [kg] |

Rücksitz 01
Back seat 01



Rücksitz 04
Back seat 04



Seitensitz 04
Side seat 04

